



## Year End 2011 Charlotte/Mecklenburg New and Expanded Business

Charlotte continues to experience slower economic growth. Despite positive additions to both the professional and occupational landscapes, year-end numbers were still less than in previous years. A total of 1,089 firms created 8,850 jobs while square footage increased by 6.2 million and investment by almost \$700 million. Job creation has not been this low since 1990.

There are still reasons to remain positive. While quantity was lacking, the quality was not. Companies such as Chiquita, and Infinisource were announced in the last quarter, both relocating their headquarters to the Queen City. These companies' added more than 500 jobs combined. Chiquita's announcement was the largest corporate relocation since 1984. Charlotte's workforce diversity, public/private partnerships, availability of quality office space and active international airport, were all key elements in their location decision. These factors remain driving forces in Charlotte's growth.

In addition, an encouraging trend that manifested in 2011 was investment by higher educational institutions in new or existing facilities. Northeastern University, Davidson College, Queens University and UNC Charlotte all were involved in infrastructure improvement and growth. Despite the economic lull, Charlotte is still dedicated to improving the education of its future labor force.

Other encouraging indicators include the increase of commercial speculative development, significant manufacturing growth in both square footage and investment, and a rise in the number of construction firms. As 2012 begins, we expect to feel the positive impacts from the Democratic National Convention to be held in Charlotte in September. Hosting such an event will further showcase Charlotte's ability to persevere amidst such a long recession, in-turn, kick-starting a much needed upward growth trend.

### 2011 Year End Summary of New and Expanded Business

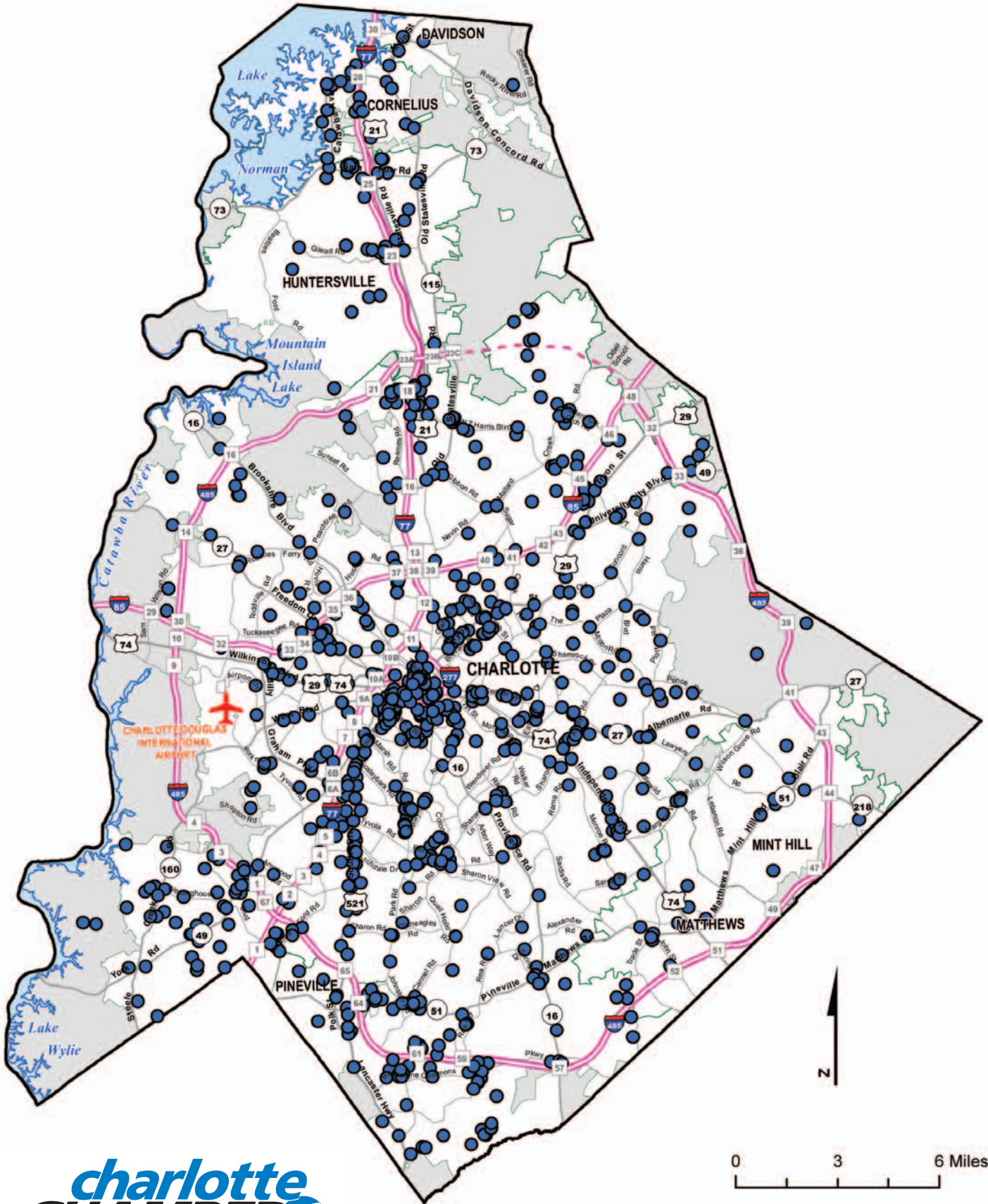
Year	Firms	Jobs	Square Feet (millions)	Investment (millions)
2011	1,089	8,850	6.2	\$669.4
2010	912	10,781	6.4	\$1,063.7
2009	1,029	15,542	11.3	\$1,461.7
2008	1,337	12,165	27.6	\$2,324.9
2007	1,326	14,648	25.1	\$2,274.8
2006	809	12,087	18.2	\$4,085.5

*This quarterly report is available at the Charlotte Chamber for \$10.00 per copy. For further information please call 704.378.1300.*

*Prepared by: Tony Crumbley, Erin Casullo Watkins and Andrew Bowen*



# New and Expanded Firms Year End 2011 Mecklenburg County



1,089 Firms

## 2011 Annual Summary of New & Expanded Business in Charlotte/Mecklenburg by Industry

NAICS	Industry	Firms	Jobs	Square Feet	\$ Investment*
22	Utilities	2	25	3,925	n/a
23	Construction	58	176	22,225	340,000
31-33	Manufacturing	27	528	630,570	94,521,300
42	Distribution/Wholesale Sales	39	305	664,075	7,400,350
44-45	Retail	257	1,056	1,307,251	96,903,408
48-49	Transport/Warehouse	24	174	192,375	520,000
51	Publishing & Broadcasting	13	34	180,805	3,240,000
52	Finance & Insurance	31	913	340,029	51,320,674
53	Real Estate/Rental	18	213	49,526	3,166,000
54	Professional & Technical Services	116	2,156	449,919	114,537,400
56	Administrative Support	56	672	178,725	17,669,208
61	Educational Services	16	27	348,350	29,171,029
62	Health Care & Social Assistance	79	210	431,200	46,072,200
71	Arts & Entertainment	25	97	56,870	10,166,900
72	Accommodations & Food Service	142	1,855	457,355	35,349,060
81	Other	181	409	165,440	10,929,505
99**	Development	5	N/A	697,400	148,117,000
	<b>Total</b>	<b>1,089</b>	<b>8,850</b>	<b>6,176,040</b>	<b>669,424,034</b>

*Note: Employment figures are incremental. Square footage does not necessarily reflect increments where firms vacate one Charlotte location for another, unless that is known. Figures reflect announcements and specifications during indicated period, but actual construction and hiring may occur in subsequent periods.*

*Source: Newspaper announcements, press releases, building permits, Chamber membership department and prospects.*

*\* Investment numbers indicate building, inventories, machines, and/or equipment.*

*\*\* The 99 classification is not an actual North American Industry Classification System (NAICS) code, but rather a Chamber classification to group mixed use and speculative development. For more information on the NAICS and its industry codes, visit [www.census.gov/eos/www/naics/](http://www.census.gov/eos/www/naics/).*

# 2011 Summary of New and Expanded Business in Charlotte/Mecklenburg County

Category	New				Expanded				Total New + Expanded			
	Q4	Q3	Q2	Q1	Q4	Q3	Q2	Q1	Q4	Q3	Q2	Q1
Number of Firms												
Manufacturing	3	0	2	5	3	1	7	4	6	1	9	9
Non-manufacturing	228	183	207	199	54	77	56	60	282	260	262	259
<b>Total</b>	<b>228</b>	<b>183</b>	<b>207</b>	<b>199</b>	<b>54</b>	<b>77</b>	<b>56</b>	<b>60</b>	<b>282</b>	<b>260</b>	<b>262</b>	<b>259</b>
Employment												
Manufacturing	30	0	41	167	0	0	215	30	30	0	256	197
Non-manufacturing	1,517	508	1,973	1,533	442	896	907	591	1,959	1,404	2,875	2,124
<b>Total</b>	<b>1,517</b>	<b>508</b>	<b>2,014</b>	<b>1,700</b>	<b>442</b>	<b>896</b>	<b>1,122</b>	<b>621</b>	<b>1,989</b>	<b>1,404</b>	<b>3,136</b>	<b>2,321</b>
Square Footage (thousands)												
Manufacturing	25.5	0	20.0	286.0	13.3	62.0	141.4	20.0	38.8	62.0	161.4	306.0
Non-manufacturing	387.8	322.8	428.9	339.1	935.0	923.0	1,471.9	799.5	1,322.8	1,245.8	1,900.8	1,138.6
<b>Total</b>	<b>413.3</b>	<b>322.8</b>	<b>448.9</b>	<b>625.1</b>	<b>948.3</b>	<b>985.0</b>	<b>1,613.3</b>	<b>819.5</b>	<b>1,361.6</b>	<b>1,307.8</b>	<b>2,062.2</b>	<b>1,444.6</b>
Investment* (millions)												
Manufacturing	3.1	0	1.3	26.0	3.7	2.3	23.3	34.6	6.8	2.3	24.6	60.6
Non-manufacturing	27.8	4.7	24.5	15.6	126.3	136.7	188.1	51.4	154.1	141.4	212.6	67.0
<b>Total</b>	<b>30.9</b>	<b>4.7</b>	<b>25.8</b>	<b>41.6</b>	<b>130.0</b>	<b>139.0</b>	<b>211.4</b>	<b>86.0</b>	<b>160.9</b>	<b>143.7</b>	<b>237.2</b>	<b>127.6</b>

Note: Employment figures are incremental. Square footage does not reflect increments where firms vacate one Charlotte location for another. Figures reflect announcements during indicated period, but actual construction may occur in a subsequent period.

Source: Newspaper ads, press releases, building permits, Chamber Membership Department and Chamber prospects.

\* Indicates building, inventories, machines, and/or equipment