

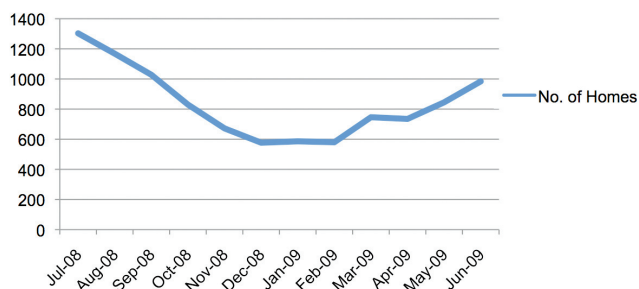


PATRICKSCHNEIDERPHOTO.COM

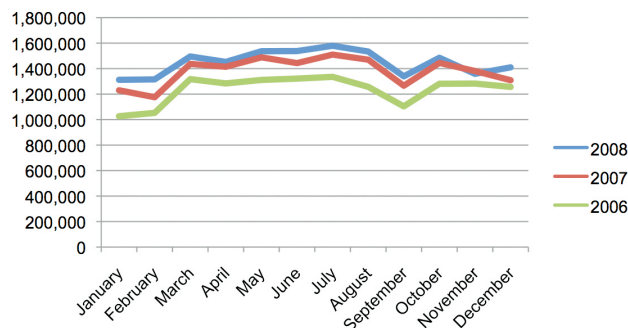
## Positive Charlotte Indicators

- » Population continues to grow. Charlotte continues to lead the nation with in-migration of young, educated workers.
- » Seventeen construction cranes are in Charlotte’s skyline adding to the city’s infrastructure for future growth.
- » There is a three month supply of vacant new homes in Charlotte compared to an 11 month supply nationally.
- » Cost of living in Charlotte continues to be nearly 6 percent below the national average. Construction cost is 20 percent below the nation’s.
- » Charlotte continues to add jobs and business investment. In 2008, 1,337 businesses added 12,165 new jobs and invested over \$2.3 billion in a record 27.6 million square feet of new facilities. Through mid-year 2009, 446 companies have created 7,316 new jobs — the third-highest number since 1999.
- » Residential real estate sales saw the first increase in April and have continued through June to record more homes sold than previous months.
- » Charlotte continues to be the nation’s second largest banking center with \$2.3 trillion in headquartered assets.
- » The number of newly registered unemployment applicants declined in April for the first time in more than a year.
- » Air passenger enplanements in 2008 at Charlotte Douglas International Airport were five percent above 2007’s record year, which surpassed 17.3 million passengers. International passengers were up five percent. 2009 is less than one percent below 2008’s record year.
- » New business prospects continue to consider Charlotte for new facilities. Each week on average nine new companies seek information from our staff and four visit the city for a closer look.

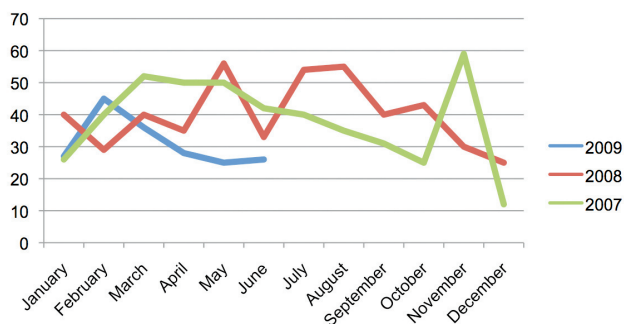
**Mecklenburg Residential Sales**



**Passenger Enplanements**



**New Chamber Economic Development Projects**



**Chamber Economic Development Client Visits**

