

CHARLOTTE

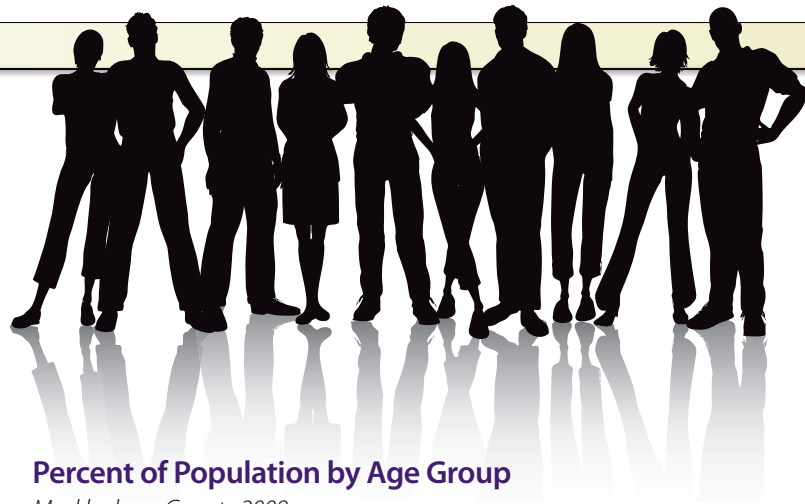
IN DETAIL 2009



charlotte
CHAMBER

POPULATION

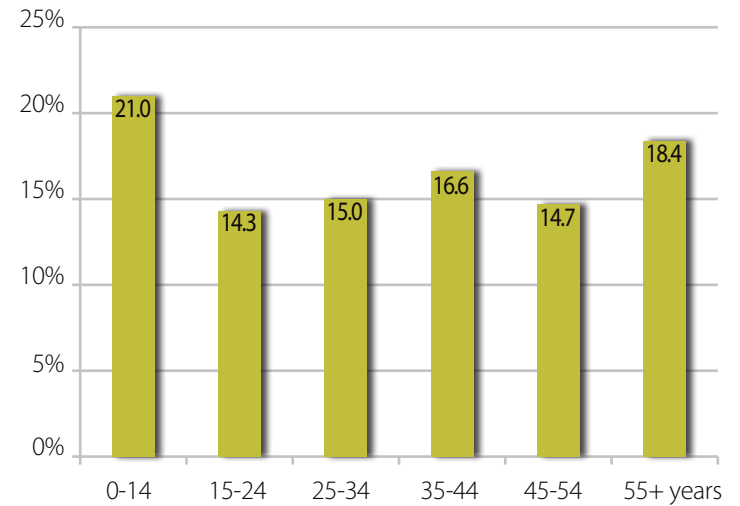
A clear picture of a community can be painted by its numbers — population, growth, businesses, jobs, job growth, diversity, taxes, ages and availability of free time. All of these factors together form the quality of life in the community. Without a doubt, Charlotte is a quality community, and the numbers that follow prove just that.



Year	Charlotte	Mecklenburg County	Charlotte MSA
2009	716,874	935,304	1,725,759
2008	695,995	902,803	1,676,495
2007	664,342	871,432	1,626,694
2006	648,139	850,178	1,594,799
2005	632,760	820,635	1,545,348
2004	614,330	790,809	1,500,338
2003	594,176	770,299	1,453,816
2002	579,684	746,427	1,411,472
2001	551,645	720,490	1,370,361
2000	540,828	695,454	1,330,448
1990	395,934	511,433	1,024,096
1980	315,473	404,270	855,538
1970	241,420	354,656	741,118
1960	201,564	272,111	426,549

Percent of Population by Age Group

Mecklenburg County 2008



Source: ESRI Population Estimates

U.S. (population) rank, City of Charlotte 19
 U.S. (population) rank, MSA 35

Source: U.S. Census, American Community Survey 2007

Median Age

Males: 34.2
 Females: 36.0

Land Area

Square Miles

City 288
 County 543

Household Income

Mecklenburg County 2008

Households 345,600
 Average Household Effective Buying Income \$60,671
 Median Household Effective Buying Income \$44,702

COVER PHOTOGRAPH ©PatrickSchneiderPhoto.com

Published by Charlotte Chamber of Commerce, Economic Development department
 330 S. Tryon St., Charlotte, NC 28202 (704) 378-1300.
www.charlottechamber.com/economicdevelopment
www.twitter.com/cltecondev

Copyright 2009 by Charlotte Chamber of Commerce. All rights reserved. No part of the publication may be reproduced or transmitted in any form or by any means, electronic or mechanical, including photocopying, recording or by any information storage or retrieval system, without permission in writing from the Charlotte Chamber. The information in this publication is carefully gathered and compiled in such a way as to ensure maximum accuracy. The Charlotte Chamber cannot, and does not, guarantee either the correctness of all information furnished them nor the complete absence of errors and omissions. Hence, responsibility for same neither can be, nor is, assumed.





In-Migration, Mecklenburg County, 2000

Moved 1995-2000 from:

Same State	40,972
Different State	126,199
U.S. Protectorate	469
Foreign	26,478
Total	194,118

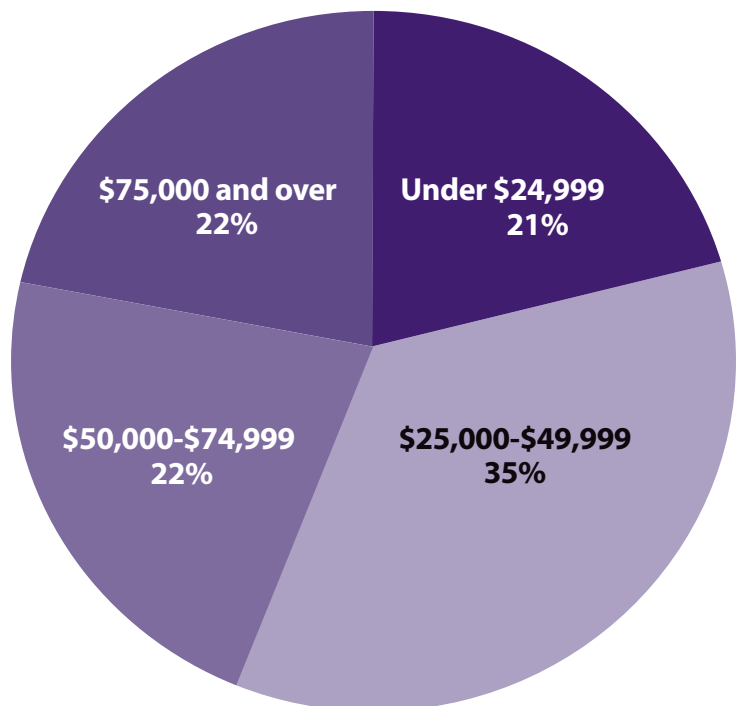
Top Ten In-Migration Counties

Number of People

Guilford	3,410
Wake	3,246
Gaston	2,968
Cabarrus	2,839
Union	2,763
Forsyth	2,479
York, SC	2,477
Richland, SC	2,019
Iredell	1,576
Cumberland	1,552

Source: U.S. Census 2000

Households by Effective Buying Income Group Mecklenburg County 2008



Source: Demographics USA, County Edition 2008

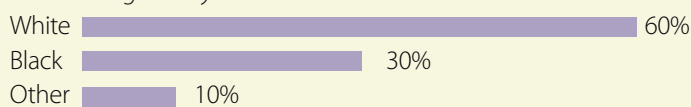
Mecklenburg County Population Projections

(Growth rate is projected at 3.6% per year)

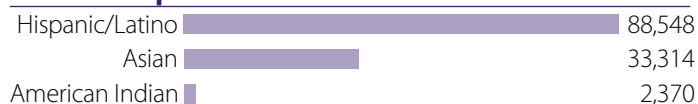
Year	Population
2010	968,975
2019	1,315,308

Racial Composition

Mecklenburg County 2007



Ethnic Population



Source: U.S. Census, American Community Survey 2007

GOVERNMENT & TAXES

Form of City Government	Council-Mayor and Manager
Form of County Government	Commissioners and Manager
Charlotte-Mecklenburg Police Personnel	2,120
Fire Stations, City of Charlotte	40
Fire Personnel (full-time, city)	1,083
Volunteer Fire Stations, Mecklenburg County	17
Fire Personnel (volunteer, county)	750
Public Libraries	24
Total Volumes Held (Public Libraries)	1.3 million
Total Circulation	6.8 million

2008-2009 City Budget in Brief

	Millions	Percent
Total Budget	\$1,828.3	100.0
Water & Sewer	414.6	22.0
Aviation	379.5	21.0
Public Works	350.3	19.0
Public Safety	308.7	17.0
Public Transit (CATS)	175.0	10.0
Economic Development	72.6	4.0
Storm Water	68.0	4.0
General Government	59.6	3.0

2008-2009 County Budget in Brief

	Millions	Percent
Total Budget	\$1,408.1	100
Community Health & Safety	302.7	21.5
Social, Education & Economic	176.7	12.5
Effective & Efficient Government	161.8	11.5
General Debt Service	93.8	6.7
Growth Management & Environment	85.8	6.1
County Capital	26.0	1.8

Sources of City Revenue

	Millions	Percent
Total Revenue	\$1,828.3	100.0
Property & Vehicle Tax	511.3	27.0
Water & Sewer	414.6	22.0
Aviation	379.5	21.0
Public Transit	175.0	10.0
Bonds	142.7	8.0
User Fees & Other	137.2	8.0
Storm Water	68.0	4.0



Sources of County Revenue

	Millions	Percent
Total Revenue	\$1,408.1	100.0
Net Property Taxes — Current	796.6	56.5
Sales Tax — Unclassified	202.2	14.4
Fund Balance	75.6	5.4
Other Revenue	32.1	2.3
Investment Interest	14.6	1.0

*Numbers may not total due to rounding

Source: Mecklenburg County, Office of the Tax Collector

Charlotte-Mecklenburg Property Tax

	Rate Per \$100 Valuation	Assessed Valuation (Billions)	Tax Levy (Millions)
2008	1.297	\$97.3	\$816.0
2007	1.297	93.6	727.0
2006	1.278	90.5	682.8
2005	1.257	84.3	638.2
2004	1.177	83.5	618.2
2003	1.156	69.5	584.2
2002	1.307	67.8	567.9
2001	1.307	64.2	469.5
2000	1.197	60.4	440.7
1999	1.197	57.0	392.5

Mecklenburg County May 2009

Total Labor Force	456,651
Employed	406,298
Unemployed	50,353
Unemployment Rate.	11%
Registered Active Job Applicants within a 25 mile radius	81,045

Source: N.C. Employment Security Commission 6/09

Mecklenburg County Employment Trends

Year	Employment		Unemployment	
	Number of Jobs*	Employed Residents**	Total	Percent
2008	566,904	437,231	28,573	6.1
2007	565,116	436,031	20,616	4.5
2006	538,199	427,125	20,019	4.5
2005	518,986	412,114	21,280	4.9
2004	508,536	403,664	21,285	5.0
2003	502,600	396,952	22,109	5.3
2002	510,626	387,822	24,448	5.9
2001	518,913	390,579	16,266	4.0
2000	528,270	390,044	9,870	2.5
1999	505,870	354,152	7,268	2.0

*Number of Jobs 3rd Quarter 2008 **Employment, Unemployment Annual Average 2008

New Job Growth vs. Unemployment

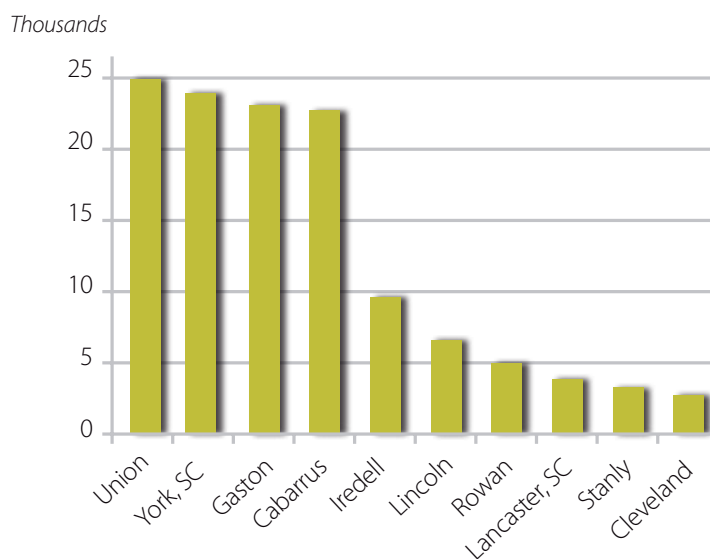
Year	Jobs Created	Unemployment (%)
2008	12,165	6.1
2007	14,648	4.5
2006	12,087	4.5
2005	13,418	4.9
2004	11,761	5.0
2003	16,171	5.8
2002	12,025	6.0
2001	9,548	4.0
2000	19,758	2.5
1999	19,758	2.0

Source: N.C. Employment Security Commission and Charlotte Chamber of Commerce



Top 10 In-Commuting Counties, 2000

Total In-Commuters: 146,211



Charlotte Industrial Firms

Industrial Category	# of Firms	Employment
Food Manufacturing (311)	57	3,885
Beverage & Tobacco (312)	7	598
Textile Mills (313)	21	404
Textile Products (314)	30	600
Wood Products (321)	25	683
Paper (322)	41	1,989
Printing (323)	154	2,377
Chemical (325)	79	2,385
Plastics & Rubber (326)	38	3,216
Non-Metallic Mineral (327)	52	1,008
Primary Metal (331)	18	949
Fabricated Metal (332)	119	3,150
Machinery (333)	125	5,485
Computer & Electronic Products (334)	42	3,806
Electrical Equipment (335)	26	397
Transportation Equipment (336)	29	485
Furniture (337)	46	878
Miscellaneous (339)	91	1,533
Total	1,000	33,828

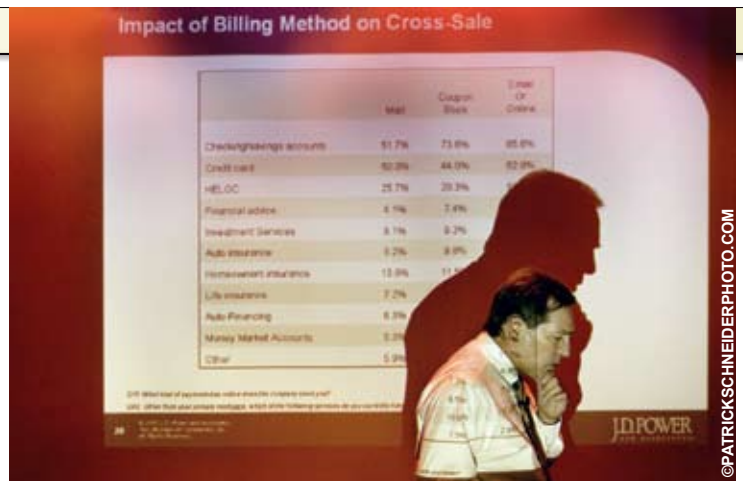
(311) NAICS Code. Source: North Carolina Employment Security Commission 12/08

Cities with Seven or More Fortune 500 Companies

Rank	City	# Headquartered
1	New York	43
2	Houston	27
3	Dallas	14
4	Chicago	9
4	Atlanta	9
4	Minneapolis	9
7	Charlotte	7
7	St. Louis	7
7	San Francisco	7

Total number of Fortune 500 firms represented in Mecklenburg County: 326

Source: Fortune, 2009



Industry Structure

Category	# of Units	Employment
Total All Industries	33,397	569,485
Mining	12	226
Construction	2,604	31,740
Manufacturing	1,011	33,926
Wholesale and Retail Trade	6,539	95,366
Information	578	18,995
Utilities, Transportation and Warehousing	739	32,077
Real Estate, Rental and Leasing	1,752	10,479
Finance and Insurance	2,367	50,786
Professional and Technical Services	4,274	40,414
Education, Healthcare and Social Services	2,744	92,141
Administrative and Waste Services	2,040	45,804
Accommodations and Food Services	2,280	48,355
Arts, Entertainment and Recreation	394	8,819
Other Services (Ex. Public Admin.)	2,220	15,916
Public Administration	78	16,651
Unclassified	3,435	2,158

Source: ESC/LMI Division, Employment and Wages Unit, 4th Quarter 2008 Mecklenburg County

Headquartered Fortune 500 Companies

Fortune Rank	Company Name	Revenues (Billions)
9	Bank of America	\$113.1
48	Lowe's*	48.2
106	Nucor	23.7
204	Duke Energy	13.2
337	Sonic Automotive	7.5
359	Family Dollar	7.0
354	Goodrich Corp.	7.1
402	SPX	6.1

*Located in Mooresville just north of Charlotte

Charlotte Region's Largest Employers, 2008

Rank	Employer	Employment
1	Carolinas HealthCare System*	26,283
2	Wells Fargo/Wachovia Corporation	20,000
3	Charlotte-Mecklenburg Schools*	19,485
4	Bank of America*	13,960
5	Wal-Mart Stores, Inc.	13,192
6	Presbyterian Regional Healthcare	9,000
7	Food Lion, Inc.*	8,658
8	Duke Energy Corporation*	7,757
9	State of North Carolina	7,479
10	US Airways	5,955
11	Lowe's*	5,900
12	City of Charlotte*	5,896
13	U.S. Postal Service	5,400
14	Adecco	5,000
15	Union County Public Schools*	4,744
16	Ruddick/Harris Teeter*	4,700
17	Mecklenburg County*	4,700
18	Gaston County Schools*	4,580
19	Daimler Trucks North America LLC	4,540
20	South Carolina State Government	3,739
21	Parkdale Mills Inc*	3,600
22	Compass Group	3,518
23	Cabarrus County Schools*	3,500
24	Rowan-Salisbury Schools*	3,500
25	Iredell-Salisbury Schools*	3,450
26	AT&T North Carolina	3,290
27	US Government	3,244
28	Caromont Health Inc.	3,230
29	Corestaff Services	2,900
30	UNC Charlotte	2,800
31	Belk Inc*	2,700
32	TIAA-CREF	2,650
33	Labor Ready Inc.	2,545
34	Bi-Lo LLC	2,538
35	Cleveland County Schools*	2,500
36	CVS Corp	2,500
37	United Parcel Service	2,500
38	Marriott International	2,475
39	Hickory Springs Manufacturing Co*	2,410
40	Target Stores	2,400

*Headquarters Charlotte Region. Source: Charlotte Chamber of Commerce



COURTESY OF CAROLINAS HEALTHCARE

Finance Companies

Banks and Holding Companies	24
Total Headquartered Bank Assets	\$2.3 Trillion
Mortgage Bankers & Brokers	348
Venture Capital Firms	11

Retail Sales

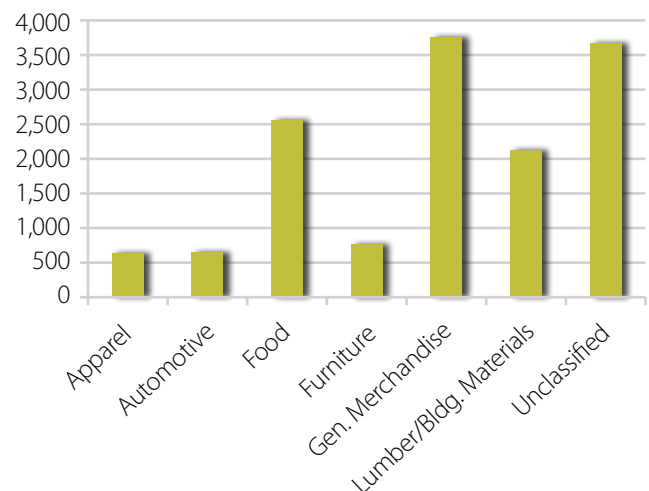
Mecklenburg County

Year	Total Sales
2008	\$13,593,120,411
2007	14,078,512,749
2006*	13,357,308,426
2005	14,307,757,702
2004	17,967,753,193
2003	16,174,307,063
2002*	15,556,415,321
2001	15,611,209,478
2000	16,795,496,666
1999	16,765,781,041

*Previous annual numbers are not comparable because of calculation change.
Source: North Carolina Department of Revenue

2007-08 Retail Sales by Category

Mecklenburg County



Source: North Carolina Department of Revenue

**Wholesale Sales 2002 —
Top 25 Counties per Capita**

Rank	County	Wholesale Sales	
		Billions	Per Capita
1	DuPage County, IL	\$92.5	100.3
2	Fulton County, GA	84.7	98.2
3	New York County, NY	140.7	89.6
4	Bergen County, NJ	69.6	77.7
5	Ventura County, CA	56.5	72.3
6	Somerset County, NJ	21.9	71.8
7	Fairfield County, CT	51.8	57.9
8	Morris County, NJ	26.8	55.9
9	Arapahoe County, CO	28.5	55.9
10	Gwinnett County, GA	36.0	55.5
11	Oakland County, MI	62.1	51.6
12	Hennepin County, MN	55.6	49.6
13	Montgomery County, PA	35.7	46.7
14	Mecklenburg County, NC	32.7	44.5
15	Dallas County, TX	95.3	41.9
16	Johnson County, KS	19.7	41.4
17	Shelby County, TN	37.1	41.2
18	Westchester County, NY	37.8	40.2
19	Burlington County, NJ	17.4	39.7
20	Middlesex County, NJ	29.5	38.3
21	Harris County, TX	135.4	37.9
22	Orange County, CA	109.9	37.5
23	Larimer County, CO	9.9	37.4
24	Multnomah County, OR	24.8	36.7
25	Denver County, CO	20.0	35.9

Source: U.S. Census



New & Expanded Business Activity

Year	# Firms	Employment	Square Feet (Millions)	Investment (Millions)
2008	1,337	12,165	27.6	\$2,324.9
2007	1,326	14,648	25.1	2,274.8
2006	809	12,087	18.2	4,085.5
2005	964	13,418	13.6	1,338.2
2004	998	11,761	19.8	1,114.1
2003	1,211	16,171	12.1	1,570.7
2002	983	12,025	15.1	2,061.6
2001	897	9,548	15.6	1,262.1
2000	1,126	17,571	16.8	1,819.1
1999	1,051	19,758	14.5	1,365.1

Source: Charlotte Chamber of Commerce

Foreign Firms Represented in Charlotte

Country	2009	2005	2000	1990	1980	1970	1960
Germany	129	116	100	68	41	22	6
United Kingdom	61	52	57	35	20	9	6
Japan	57	48	55	29	19	3	0
Canada	48	28	24	16	11	4	1
France	37	22	16	14	11	4	1
Switzerland	35	34	37	31	20	8	3
Italy	29	33	23	19	2	0	0
Netherlands	28	16	11	11	9	6	0
Sweden	16	15	10	8	3	2	1
South Korea	11	4	1	0	0	0	0
Australia	10	4	3	1	1	0	0
Denmark	9	8	3	3	3	0	0
India	8	4	1	0	0	0	0
Belgium	7	7	5	6	2	1	0
Mexico	7	5	2	0	0	0	0
Bermuda	6	5	1	0	0	0	0
Taiwan	6	5	5	0	3	1	0
Austria	5	2	1	0	0	0	0
Finland	4	5	4	2	0	0	0
Netherlands Antilles	4	3	2	0	0	0	0
China	3	6	4	0	0	0	0
New Zealand	3	1	0	0	0	0	0
Brazil	2	2	2	0	0	0	0
Ireland	2	2	1	1	0	0	0
Israel	2	1	1	1	1	0	0
Malaysia	2	1	1	0	0	0	0
Singapore	2	0	0	0	0	0	0
United Arab Emirates	2	0	0	0	0	0	0
Indonesia	1	1	0	0	0	0	0
Kazakhstan	1	0	0	0	0	0	0
Lebanon	1	0	0	0	0	0	0
Liechtenstein	1	1	1	0	0	0	0
Luxembourg	1	1	0	0	0	0	0
Monaco	1	0	0	0	0	0	0
Portugal	1	0	0	0	0	0	0
Saudi Arabia	1	0	0	0	0	0	0
Spain	1	2	0	2	0	0	0
Venezuela	1	0	0	0	0	0	0
Total	546	446	380	250	147	60	18

Source: Charlotte Chamber of Commerce

Mecklenburg's Largest Foreign-Born Population

Mexico	24,960
India	6,878
Vietnam	5,635
El Salvador	5,534
China	2,780
Canada	2,547
United Kingdom	2,480
Korea	1,980
Guatemala	1,943
Columbia	1,800
Peru	1,674
Ecuador	1,671
Russia	1,604
Ukraine	1,578
Cuba	1,533
Jamaica	1,320
Germany	1,259
Phillippines	1,220
Laos	1,186
Nigeria	1,185
Dominican Republic	1,034
Egypt	1,006

American Community Survey 2007



Higher Learning in the Charlotte MSA, 2007-2008

Name of Institution	Location	Zip Code	Students	Type
Art Institute of Charlotte	Charlotte	28209	876	V
Belmont Abbey College	Belmont	28012	1,320	C
Brookstone College of Business	Charlotte	28262	259	V
Cabarrus College of Health Sciences	Concord	28025	334	C
Carolinas College of Health Sciences	Charlotte	28203	500	V
Central Piedmont Community College	Charlotte	28204	70,689	CC
Charlotte School of Law	Charlotte	28204	300	P
Davidson College	Davidson	28036	1,667	U
DeVry University/Keller Grad of Mgmt	Charlotte	28211	187	U
ECPI College of Technology	Charlotte	28217	496	T
Gardner-Webb University	Charlotte	28208	2,689	U
Gaston College	Dallas	28034	5,164	C
Johnson & Wales University	Charlotte	28202	2,631	U
Johnson C. Smith University	Charlotte	28216	1,504	U
King's College	Charlotte	28204	556	C
Lee University	Charlotte	28214	125	U
Montreat College	Charlotte	28217	400	C
Pfeiffer University at Charlotte	Charlotte	28209	1,142	U
Queens University	Charlotte	28274	2,300	U
Rowan Cabarrus Community College	Concord	28025	5,275	CC
Southern Piedmont Community College	Polkton	28135	2,258	CC
Strayer University	Charlotte	28273 & 28262	250	U
UNC at Charlotte	Charlotte	28223	22,388	U
University of Phoenix at Charlotte	Charlotte	28273	1,604	U
Wake Forest University	Charlotte	28211	160	U
Wingate University	Wingate	28174	1,809	U
Winthrop University	Rock Hill, SC	29733	6,929	U
York Technical College	Rock Hill, SC	29730	4,153	T

Type Code: U- University C- Four-Year college CC- Community College P- Graduate/Professional School T- Technical Institute V- Vocational School N/A- Not Available

Sources: Peterson's College & University Almanac 2008 Individual colleges and universities

CHARLOTTE MECKLENBURG SCHOOL SYSTEM

Number of Schools

Total number of Schools	172
Elementary Schools	99
Middle Schools	31
High Schools	33
Special Programs	9

Enrollment

Total Number of Students	134,060
Grades K-5	66,745
Grades 6-8	29,517
Grades 9-12	37,798
Pre-K	3,120

Source: Charlotte Mecklenburg Schools December 2008

Class Size

Elementary School	20 Student average
Middle School	21 Student average
High School	18 Student average
Average Daily Attendance	95%

High School Students

2008 graduates	6,731
Graduates continuing their education	85%

Private (Non-Public) Schools

Independent Schools	64
Total Number of Students	>20,000

2008 SAT Recentered Scores

Mecklenburg County	1549
North Carolina	1489
United States	1511

Source: North Carolina Department of Education and CMS

Educational Attainment

	Meck.%	U.S.%
Percent high school or higher	88.5	83.7
Percent Associates degree or higher	47.6	34.4
Percent Bachelor's degree or higher	39.7	27.0

Source: U.S. Census, American Community Survey 2007



Communications

Major Daily Newspapers	1
Television Stations	10
Local Radio Stations	28
Telephone Companies	28
Weekly Newspapers	20
Cable Television Services	1
Satellite Television Services	7

Hotels and Motels

Mecklenburg County 3/08

Total Number of Hotels and Motels	185
Total Number of Rooms	23,114

Source: Smith Travel Research

Climatological Summary

Annual Average Temperature	62° F
Lowest Monthly Average (January)	32° F
Highest Monthly Average (July)	90° F

Records

Highest Temperature	104° F
Lowest Temperature	-5° F

Precipitation

Annual Average	43 inches
Annual Snow Accumulation Average	<6 inches
Average Number of Days with Sunshine	214

Relative Humidity

February	68%
August	84%



©PATRICKSCHNEIDERPHOTO.COM



COURTESY OF PRESBYTERIAN REGIONAL HEALTHCARE

Places of Worship

Protestant	500+
Catholic	16
Jewish	6
Other	46

Medical

Acute Care Hospitals	6
Specialty Care Hospitals	4
Assisted Living Facilities	45
Total Hospital Beds	*2,267
Nursing Schools	8
Doctors	2,296
Dentists	549

Source: North Carolina Health Professions Data System, Sheps Center UNCC 2007
*Total Hospital Bed Number includes CMC and Presbyterian

Recreational

Total Park Acres	17,600
Shopping Centers (>30,000 SqFt.)	389
District, Neighborhood & Community Parks	210
Miles of Greenway Parks	33
Public and Semi-Private Golf Courses	36
Private Golf Courses	21
Country Clubs	20
Disc Golf Courses	6
Nature Preserves	6
Dog Parks	5
Parks w/Public Boat Launches/Docks	3
Skate Parks	2
Equestrian Center	1
BMX Track	1

Source: Mecklenburg County Park and Recreation and Carolinas Real Data

Cultural

Affiliate/Associate Groups with Arts & Science Council	62
2008 Arts & Science Council Budget	\$18.0 mil.
2008 Fund Drive	\$11.2 mil.

www.artsandscience.org

New Residential Permits

Year	Single Family	Multi-Family	Total Units
2008	3,758	6,747	10,505
2007	7,494	6,306	13,800
2006	10,215	7,874	18,069
2005	9,775	3,827	13,602
2004	8,730	3,960	12,690
2003	8,935	3,677	12,612
2002	9,638	3,851	13,489
2001	9,766	4,718	14,484
2000	9,398	5,370	14,768
1999	9,755	4,210	13,965

Charlotte Area Residential Unit Sales*

Year	Total Sold	Average Price	Total Volume
2008	27,710	\$220,670	\$6,114,765,700
2007	39,983	231,170	9,242,870,110
2006	43,748	220,510	9,646,871,480
2005	38,818	209,901	8,147,937,018
2004	33,114	198,918	6,586,970,652
2003	25,426	192,042	4,882,859,892
2002	23,795	185,251	4,408,047,545
2001	22,171	177,959	4,049,425,239
2000	21,340	176,958	3,828,838,284
1999	21,536	163,559	3,700,412,348

*Carolina Multiple Listing Services, Inc., CMLS Service Area

Construction

Year	Permits	Value (Millions)		
		Residential	Non-Residential	Total
2008	10,834	\$1,486.3	\$2,236.9	\$3,723.2
2007	21,462	2,223.7	1,823.4	4,047.1
2006	24,250	2,700.0	1,600.0	4,300.0
2005	22,037	2,063.2	1,297.6	3,051.0
2004	19,243	1,730.8	1,326.1	3,056.8
2003	18,984	1,600.8	905.7	2,506.5
2002	19,770	1,564.1	814.4	2,378.5
2001	19,174	1,640.2	1,117.5	2,757.7
2000	18,937	1,641.0	1,670.6	3,305.7
1999	19,323	1,313.7	1,044.2	2,357.8

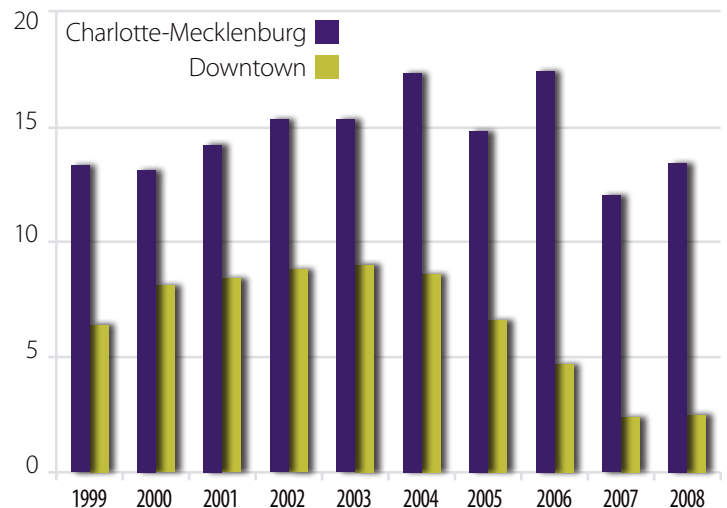


Charlotte-Mecklenburg Historical Trends in Office Space

Date	Rentable SF (Millions)	Used SF (Millions)	Available SF (Millions)
9/08	45.2	39.8	5.4
9/07	42.5	37.4	5.1
9/06	41.8	36.0	5.8
9/05	40.3	34.3	5.9
9/04	38.7	32.0	6.7
9/03	38.2	32.3	5.9
9/02	37.7	31.9	5.8
9/01	35.5	30.5	5.0
9/00	33.4	29.0	4.4
9/99	31.1	27.0	4.1

Source: Carolinas Real Data

Percentage of Rentable Office Space Available



Office Space Survey by Area 9/08

Area	No. of Buildings	Reported Rentable SF	Percent Available SF	Average Available	Rate/SF
Downtown	54	14,305,148	399,894	2.80%	\$28.57
Suburban	566	31,460,361	6,368,660	20.2%	\$19.36
Total	620	45,765,509	6,768,554	14.8%	\$22.24

Source: Carolinas Real Data

Cost of Living Index Top 40 Metro Markets — First Quarter 2009

Rank	City	All Items Index
1	St. Louis, MO	87.6
2	Nashville, TN	88.7
2	Indianapolis, IN	88.7
4	Houston, TX	89.2
5	Pittsburgh, PA	92.2
6	Charlotte, NC	92.3
7	Cincinnati, OH	92.4
8	Dallas, TX	92.9
9	San Antonio, TX	93.6
10	Columbus, OH	94.7
11	Jacksonville, FL	94.8
12	Austin, TX	94.9
12	Atlanta, GA	94.9
14	Tampa, FL	95.2
15	Kansas City, MO	95.5

Rank	City	All Items Index
16	Orlando, FL	98.2
17	Cleveland, OH	99.3
18	Detroit, MI	100.1
19	Denver, CO	101.9
20	Milwaukee, WI	102.0
21	Virginia Beach, VA	110.4
22	Miami, FL	111.0
23	Chicago, IL	113.5
24	Minneapolis, MN	114.4
25	Riverside, CA	114.8
26	Sacramento, CA	115.3
27	Providence, RI	116.5
28	Portland, OR	117.1
29	Baltimore, MD	121.7
30	Philadelphia, PA	122.6

SOURCES: U.S. Department of Commerce — Bureau of Census, 2000; ACCRA — Cost of Living Index, 2009

Thank you to our Economic Development Fund Sponsors

Platinum sponsors:



Silver sponsors:



Bronze sponsors:

ADT Security Services	EDS	Louis Raphael - Kizan Int'l, Inc.	Pillsbury Winthrop Shaw Pittman LLP	Tandus Commercial Carpet
Artistic Images, Inc.	Gensler	Neema Clothing	Rodgers Builders	The Ad Art Company
Balfour Beatty	Goldman Sachs	NELSON	RT Dooley Construction Company	The Miller Group
CBL & Associates Properties, Inc.	Grant Thornton LLP	Nexsen Pruet, PLLC	Scurry Construction, Inc.	Unicco Service Company
Clark Companies N.A.	Hosted Solutions	Norfolk Southern	Shaw Integrated Solutions	VF Corporation
Columbia Sportswear Company	Hull Storey Gibson Companies LLC	Otis Elevator	Sibson Consulting	W.P. Rose Plumbing
Cox-Schepp Construction Inc.	K&L Gates LLP	Perkins + Will	SteelFab, Inc.	Wackenhut Corporation
Edifice, Inc.	Knoll, Inc.	Phillips-Van Heusen Foundation, Inc.	Systems Plus Solutions	Watson Wyatt Company
	Lincoln Harris	Pike Electric, Inc.		Weyco Group

Charlotte Douglas International (CLT International Airport) Rankings 2008

8th Nationwide in total operations
14th Nationwide in total passengers
34th Nationwide in cargo (freight, mail)

Source: CLT International Airport

Major Airlines	8
Regional Carriers	7
Number of Flights Daily (April 2009)	655
Direct/Nonstop Flights	134

Air Cargo 2008

62,386 tons enplaned
70,754 tons deplaned

Air Passenger Enplanements

2008	17,357,993
2007	16,568,589
2006	14,829,903
2005	14,043,554
2004	12,417,506
2003	11,511,465
2002	11,792,511
2001	11,557,058
2000	11,498,794
1999	10,684,261

Top 15 Airports Served by CLT International Airport (4th Quarter 2008)

Rank	Destination	Passengers Daily
1	La Guardia	1,297
2	O'Hare	1,036
3	Boston	994
4	Newark	880
5	BWI	753
6	Dallas/Ft. Worth	666
7	JFK	652
8	Orlando	646
9	Los Angeles	610
10	Las Vegas	561
11	Detroit	552
12	Minneapolis/St. Paul	487
13	Ft. Lauderdale	455
14	Denver	450
15	Philadelphia	447

Highways Serving Area

U.S. Primary	21, 29, 52, 74, 521, 601
State Primary	16, 24, 27, 49, 51, 73, 160
Interstates	I-85 (I-485), I-77 (I-277)

Trucking/Warehousing & Storage Firms

Trucking Firms	327
Warehousing & Storage Firms	84

Source: U.S. Census County Business Patterns 2006

Rail Service

On-Line Railroads	Norfolk Southern & CSX Transportation
Off-Line Railroads	Amtrak
Trains through Charlotte Weekly	300



Bus Service

Provided by	Greyhound/Trailways
In-City Service	Yes
Charter Services	28

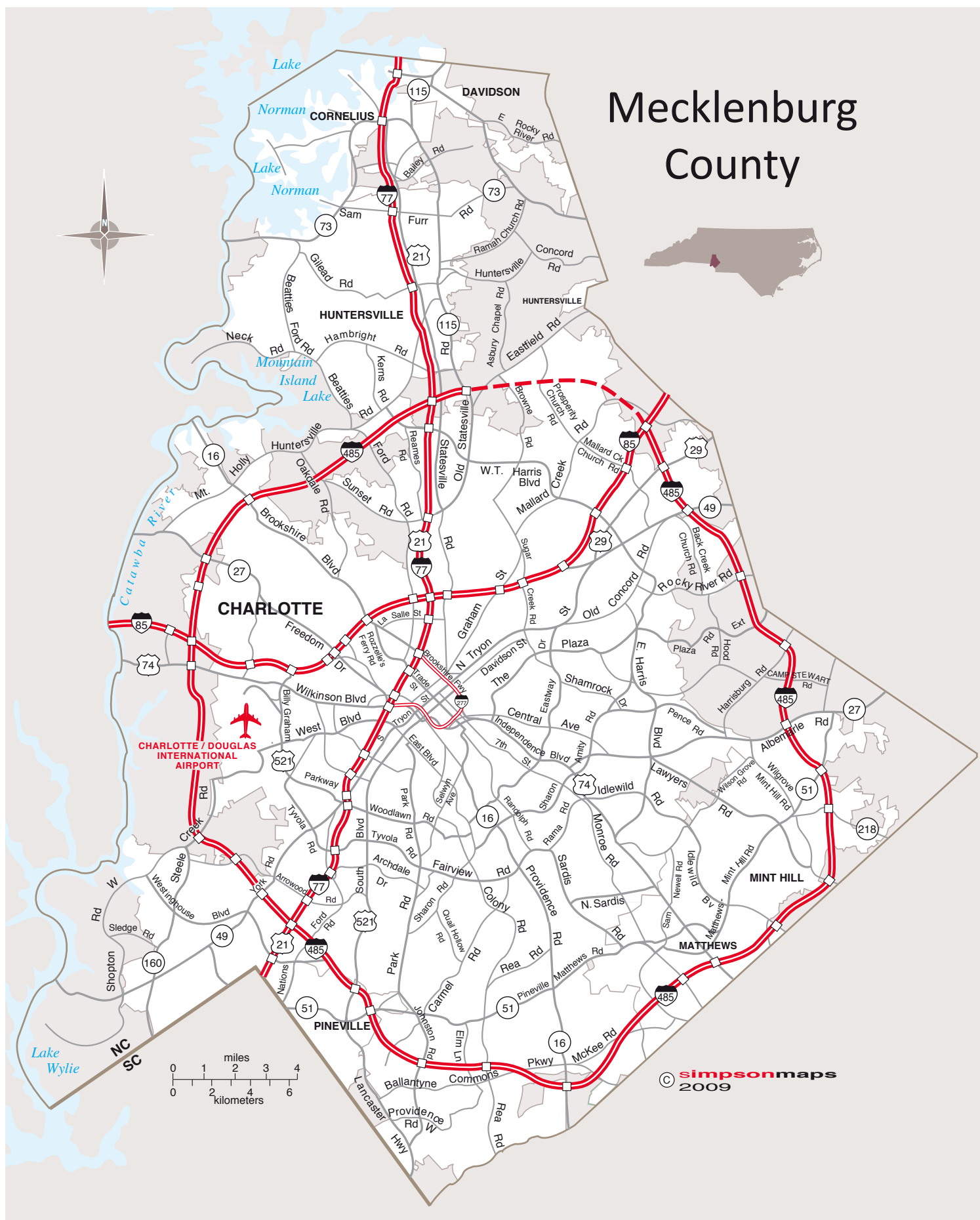
Port Facilities

Inland Port opened in 1984
Currently handling more than 32,000 containers annually
Charlotte also offers a Foreign Trade Zone
Easy accessibility to N.C. and S.C. ports
Port of Wilmington: 204 miles away
Port of Charleston: 207 miles away

U.S. Customs — Charlotte

The Charlotte branch of U.S. Customs and Border Protection offers a service port with a full range of cargo processing functions, including inspections, entry, collections and verifications.

Mecklenburg County



© simpsonmaps 2009

Change is good.

But when it comes to relocating your employees, it can also be tedious, complicated and stressful.



It doesn't have to be. If you're relocating or expanding your business, you need **Allen Tate Relocation Services** to take care of the tough stuff.

For more than 40 years, we've been helping companies like yours handle the details of relocating employees – *so you can get on with your business.*



Allen Tate Relocation Services. *Moving right along.*

